



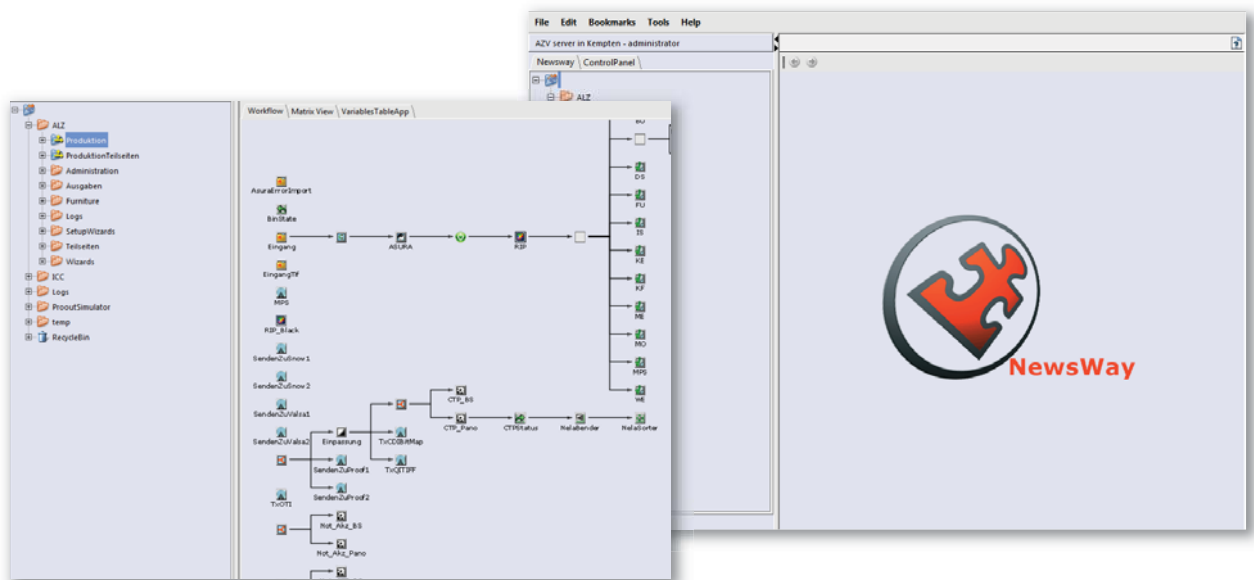
NewsWay System

Makes complex publishing simple...

- Automated workflow system
- Cost-effective customization for every publishing-industry need
- Scalable to meet tomorrow's needs

ProlImage's NewsWay is a highly advanced digital workflow and production tracking solution for the newspaper and magazine printing industries. Designed based on four major generic technologies that form the foundation of ProlImage's web-based products, these technologies dramatically improve the performance of your production workflow.

The highly modular NewsWay software will control and manage your production workflow from a variety of front-end editorial systems through to the press via a plate-making process. Because it uses a simple web browser, NewsWay will monitor production status from origination to print sites, regardless of their location.



For more information contact any of our subsidiaries or visit our web site:
www.new-proimage.com

New ProlImage America, Inc.
103 Carnegie Center - Suite 300
Princeton, NJ 08540
USA
Tel: (609) 844-7576
Fax: (609) 895-2666
sales.us@new-proimage.com

New ProlImage Ltd.
Rowlandson House
289-293 Ballards Lane
London N12 8NP
United Kingdom
Tel: +44 (0) 84545 88600
Fax: +44 (0) 84545 88601
sales.eu@new-proimage.com

New ProlImage Ltd.
Poleg Industrial Park
4 Hagavish st.
Netanya, Israel 42507
Tel: +972-732-600-300
Fax: +972 732-600-333
sales.aspac@new-proimage.com

PROIMAGE

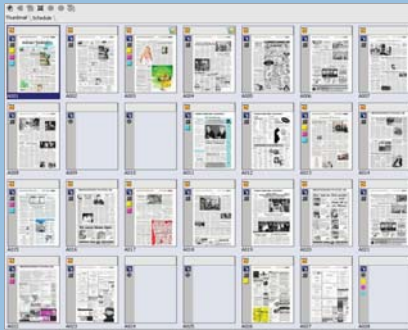
**Web-Browser-Based
License-Free Clients**

ProImage's NewsWay was designed and built as a web-based-browser software platform from the ground up. As such, none of the web and browser-related features of NewsWay are add-ons but an integral part of the solution. The NewsWay platform is the software foundation on which the user, through a browser, may interact with the solution's powerful plugged-in modules. Moreover, the web server foundation of NewsWay gives high visibility to all functions of any NewsWay system throughout the entire enterprise, be it on a local or wide area network (LAN or WAN). It even provides visibility through the Internet for authorized users. NewsWay also allows for very easy software upgrades. As the core software resides on the server and the workstations are simply license-free web clients, all that is needed is to upgrade the software in the server. Unlike most other software applications, users do not need to upgrade each workstation.

making
complex
publishing
simple

Instant Views

The NewsWay platform automatically generates thumbnails and composite, low-resolution views of all page elements that go through the system. This provides users with instant views of every production element and full control of the entire process.



Flexibility and Adaptability

The NewsWay platform has been designed with flexibility in mind. It is tailored to the environment in which it is installed, not the other way around. To further enhance this flexibility, ProImage has developed a highly adaptable Naming Convention Engine that can be programmed to accept virtually any naming convention.

Highly Scalable

The NewsWay platform was designed and built with scalability in mind to address the ever-changing requirements of the printing and publishing industries. An integral part of the solution is its clustering capability, which allows multiple slave servers to run under the control of the main server. NewsWay Cluster has a single server manager that coordinates the tasks, as well as any number of NewsWay servers assigned to different processes. Each NewsWay server manager and server runs on single PC. As many as needed may be clustered to spread the workload and provide back-up. In short, the platform can "grow as you go," adapting to the changing needs of the industry.



Job Tracking

The NewsWay platform has flexible built-in mechanisms for highly sophisticated job tracking capabilities. They support layered views – from very general views to highly detailed separation level information – that provide users with the actual status of each system element in real time.



Outstanding Collaboration Tools

The NewsWay platform is the natural platform for collaborative working. Because of its web-server-based architecture, NewsWay is open to all methods of messaging and collaboration offered by modern communications technology, and also supports its own highly developed notes and collaboration tools.

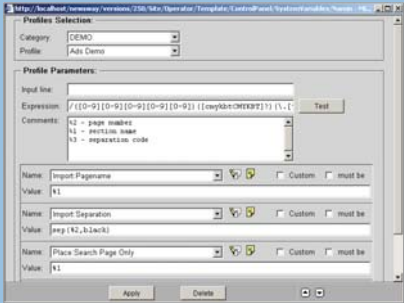
Drag and Drop

Drag-and-drop is the method of working that is native to the NewsWay platform. A highly intuitive GUI and user screens make it very easy to operate.



Custom Built

Through the unique Scripting Tools of the NewsWay platform, each system can be customized to the exact requirements of each user. Not only are these scripting tools essential during the setting-up of each system, but they also provide customers with the flexibility to further alter and customize their NewsWay systems as their requirements change.



Standard Platform

The NewsWay platform runs on standard Windows Server 2008 R2 Operating System using PC hardware, making it very easy to maintain, source spare parts, and upgrade.

Superior Technology

ProImage is one of the world's most experienced companies in web-server-based development, and has also developed proprietary technologies for real-time response to web server clients. Based on distributed component relationships and on a dynamic web application model, these superior technologies put the NewsWay platform at the forefront of web-server-based production tracking systems.





NewsWay WAN Server

ProlImage's NewsWay WAN server – a fully managed page-transmission solution.

- **Broadcast transmission**
- **Multiple protocol support**
- **High-transmission efficiency**

ProlImage's NewsWay WAN server is the core of a fully-featured facsimile transmission system that will manage a publisher's most complex page distribution requirements. The server runs on the web-based NewsWay platform, giving users the tremendous benefits of web visibility and a host of other important features. Coupled with the platform's advanced communications capabilities, this lays the foundation for the world's best page-transmission system. ProlImage's NewsWay WAN server supports multiple communications protocols over a variety of communication media, including satellite and terrestrial lines. This choice provides the optimum environment for different needs and means, while proprietary communications engines developed by ProlImage provide for highest efficiency and utilization of all communications lines.

Save Money

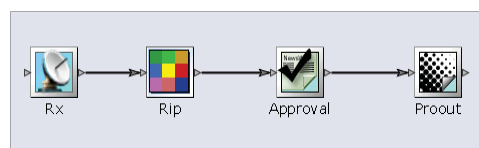
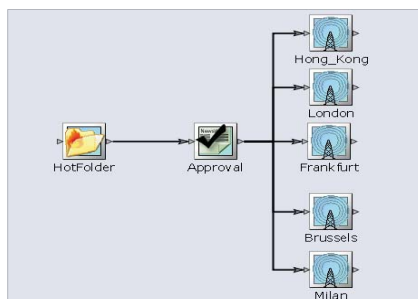
This valuable capability not only saves transmission costs but also increases productivity – and allows for ease of network expansion. The NewsWay WAN server provides up to 94% throughput using both TCP-IP and UDP. Special implementations of UDP and multicasting makes the WAN server particularly suited for satellite broadcast applications.

Error-Free, Multiple File Formats

ProlImage's NewsWay WAN uses high efficiency, reliable communication protocols. It can transmit all types of graphic files, including TIFF, PDF, PS, EPS, making it a versatile tool for mixed workflow requirements. It will handle PDF or PS files with the same ease that it will handle TIFF G4 files. Moreover, the server will handle distribution of any other file format to provide the capabilities of sending other operational documents or data to your remote sites.

Specially developed error handling protocols ensure that no defective data is received at the remote end. However, the WAN server can also work in "no reply" mode to address problems that may be caused by erratic communications coming back from remote sites.

Using the latest available technologies, the NewsWay WAN server can also work with 'reply' over Internet, eliminating the need for costly 'reply' communications. The web-based NewsWay provides unparalleled monitoring and tracking capabilities of an entire transmission network, reducing human errors and providing a much faster edition time.





NewsWay Planner

Full automation starts here...

- The ultimate tool for full automation
- Plan manually or import from third-party planners
- Integrate editorial and press planners

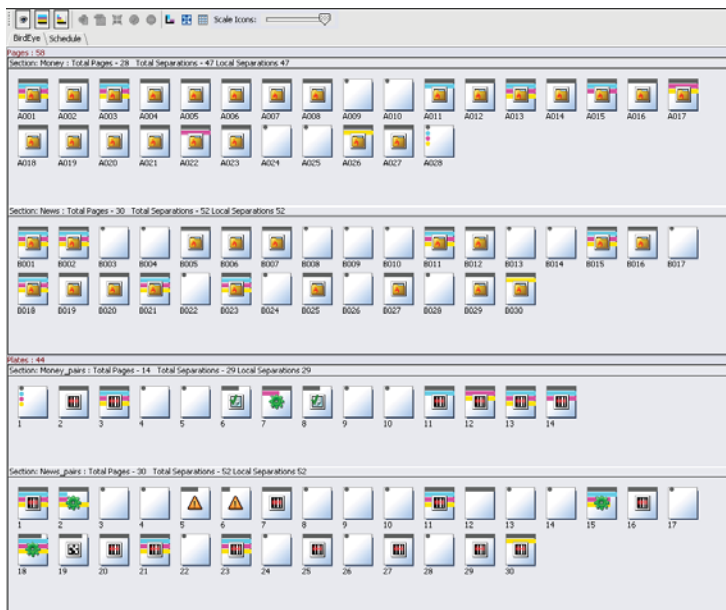
ProImage's NewsWay Planner is a module that allows full automation in any publishing enterprise that uses the NewsWay workflow. With ProImage's NewsWay Planner, you can plan an edition fully or import plans from a third-party planning system.

The module can also be customized to work with home-grown databases and custom systems, and does not require changes to existing workflow.

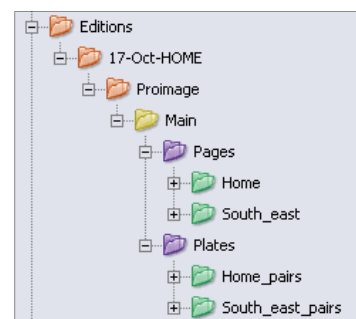
Plan to succeed with ProImage's NewsWay powerful workflow automation solutions!

Whether working in a single site or in a multisite environment, the NewsWay Planner is an essential element of an automated workflow. Through information gathered via the planner, NewsWay can automatically handle production and distribution of multielement pages as and when required.

Once an edition plan is entered or imported using ProImage's NewsWay Planner, the platform will generate the appropriate edition views, enabling users to track the progress of different products through workflows.



Obtain an overview of production progress with edition plan views



Edition hierarchy



NewsWay **Impose Server**

ProImage's NewsWay Impose – build plates and flats effortlessly.

- **Automated imposition**
- **Instant view of pages and final flats**
- **CTP-ready output**

ProImage's NewsWay Impose Server is an advanced imposition engine that features many productive imposition functions and capabilities. Based on the superior GUI of the NewsWay platform, using the impose server is very easy.

Whatever the needs of imposition, from simple text burning and overlaying of multiple images to the most complex plate-making requirements, ProImage's NewsWay Impose Server is the best tool for imposition. Integrated with NewsWay

Edition Planning, this simple-to-use tool can automate your entire production process, with no operator intervention whatsoever.

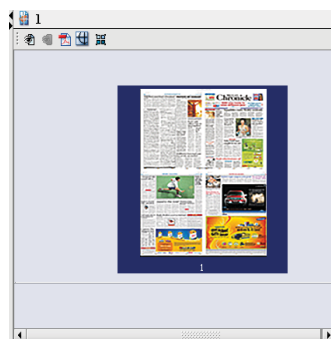
The impose server enables you to impose raster images to final bitmap flats. An essential component of the ROOM (RIP Once Output Many) operating model, the application makes late page replacements a simple matter, eliminating the need for re-RIPing entire flats.

ProImage's NewsWay impose server will stitch together any two or more elements based on a set of instructions that may be imported from a third-party layout system. Alternatively, pages can be assembled into flats interactively

Impose server offers a wide range of functions and capabilities, in both bitmap and PDF formats:

- Overlay of multiple files
- Overlay of furniture, color and gray bars on final flats
- Automated masking of unwanted image areas
- Inserts variable or fixed text on predefined areas of images
- Fan-out compensation and barcode stitching

The standard features of NewsWay enable users to monitor the status of plates as pages arrive, providing a quick overview of the entire plate production process, and assisting in error detection at the earliest production stage.



Easily build flats manually



Easily access views to gain total control

PROIMAGE



NewsWay **Proof Server**

A versatile soft-proofing solution for publishers – proof across the enterprise.

- **Instant on-screen proofs**
- **Annotation and collaboration capabilities**
- **ICC profile support**

complex
publishing
simple

Running on ProImage's NewsWay field-proven platform, the Proof Server provides users with instant soft proofs and edition-tracking capabilities that save time and money. Because NewsWay is web-based, soft proofs are available throughout a local or wide area network (LAN or WAN), or even over the Internet – all without having to install dedicated workstations. The capability to publish proofs to authorized users over the Internet enables publishers to instantaneously share proofs with customers and printers.

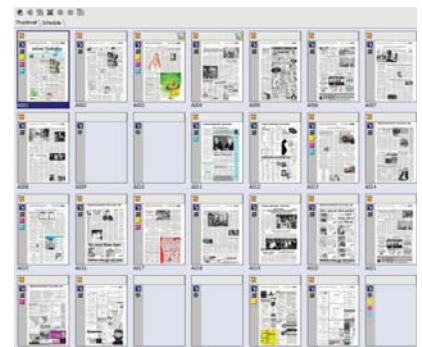
The NewsWay Proof Server provides color-balanced screen proofs, even emulating the color of the stock on which the job is to be printed, and can be installed to run in parallel with existing production systems.

Proofs are automatically generated for each individual separation, as they become available in the production stream, even before they are outputted through an output device. When all separations are available, a 4-color composite proof is generated automatically – all individual proofs of single colors and the combined 4-color proof are all available on the fly. Users can also zoom in to a specific area to see the dot structure or the rosettes that form the page.

The NewsWay Proof Server is very cost-effective in editorial, prepress and press environments where checking pages for placement (post-RIP) and content, as well as color matching, have reduced errors while saving valuable time and money.



Color corrected views of pages are available at several magnification levels



Thumbnails show individual separations or the composite image

PROIMAGE



NewsWay RIP

NWRIP (NewsWay RIP) – a RIP with a twist...

- Proven RIP technology
- Classic RIP in a user-friendly GUI
- Efficient output with soft viewing

RProImage's NWRIPs are based on powerful Harlequin® RIP engines with all the added benefits of the NewsWay platform. Operating using the NewsWay easy-to-use GUI, ProImage has licensed the Harlequin® RIP engine to bring you a classic RIP for newspaper applications.

NewsWay RIPs are fully compatible with both Postscript and PDF. Implementation of either or both of these RIPs provide publishers with a choice of features like InRIP Trapping, Color Management and Screening option such as HPS and HDS.

The RIP has wide variety of input files: PDF version all the way to PDF 1.7 and ISO 32000-1 and PDF/X-1a, PDF/X-4 and PDF/X-5g. Postscripts level 1,2,3. Other format such as EPS, DCS, TIFF and JPEG.

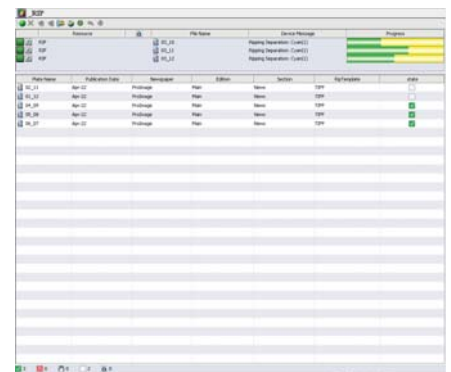
More Efficient Output with Soft Viewing

The web-based NewsWay GUI can be used to control the RIP from any client in the network. NewsWay will automatically generate previews of all RIPPed files, enabling users to view any processed file without waiting.

The application's load-balancing and clustering features also make it easy to build "RIP Farms," where a number of RIPs running on different hardware may be controlled and managed from a single GUI, to then be used in the most efficient way. Moreover, the feature allows sharing RIPs through a single input queue as well as load sharing of imaging devices.

At the output stage, the NewsWay imaging server interfaces with most known CTP Devices from AGFA, Kodak, Krause, Fuji and many others. NWRIP properties are easily managed via "naming rules," making it very simple to dynamically pass parameters to it.

For example, decision mechanisms that affect properties like RIPing in monochrome instead of CMYK can easily be applied within a NewsWay workflow.



Manage a large number of RIPs from a single screen.

PROIMAGE



NewsWay Imaging Server

Let NewsWay Imaging Server manage your resources efficiently.

- Load balance a large number of output devices
- Automate output management
- Easily migrate between output technologies

ProImage's NewsWay Imaging Server offers a complete output management solution that maximizes productivity and reduces time.

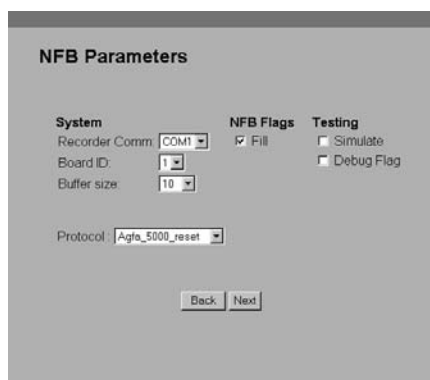
Managing expensive resources efficiently is key to lower capital costs and higher efficiency. In today's highly competitive world, this can mean additional profit margins or lower prices that will win you that valuable contract you've been after.

The imaging server drives the most popular film and platesetters (of which a detailed list is available from ProImage). As a member of the NewsWay family, the imaging server also incorporates many of the popular features of the solution such as total visibility across the enterprise, simple drag-and-drop operation and fast, robust performance.

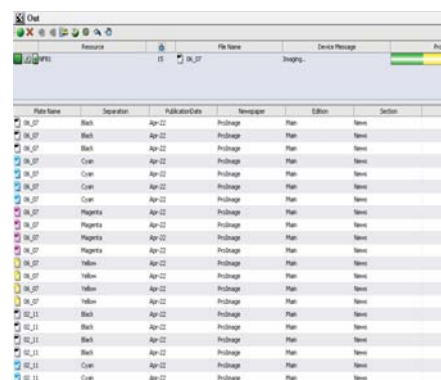
One of the many unique features of the NewsWay imaging server is its standard PCI interface card. Known as the NFB (NewsWay FlexiBoard), it enables you to change the imagesetter being driven without changing the interface NFB in the computer hardware. Physical connections of the NFB are altered by firmware and automatically downloaded to the board when the output device is selected. This feature enables users to change generations of imagesetting and platesetting equipment without having to make any hardware alterations in their workflow systems.

Driven by the NewsWay load balancing feature, the imaging server queues jobs to available resources thus managing multiple image setters most efficiently, without manual intervention.

The NewsWay imaging server takes into account color separation locking globally or section by section. You can also enable or disable locking features, for example in environments where imagesetter accuracy is within tolerance and does not need locking. ProImage's NewsWay imaging server will also drive mixed imagesetter environments, for example, to three filmsetters and two platesetter devices with the system automatically assigning jobs to the appropriate device.



Easily configure output devices using the NewsWay NFB setup screens



Easily configure output devices using the NewsWay setup screens



NewsWay Ink Control

ProImage's NewsWay Ink Control – versatile and flexible ink zoning data to the press.

- Saves time and costs
- Interfaces with a wide range of presses
- More accurate than conventional scanners

Savings in cost and RoI are the foundation of ProImage's NewsWay ink control. With the increased use of digital production, ink-zone setting has become an essential element of today's print production. The NewsWay ink control is the ultimate, simplest and most flexible tool on the market for ink-zone setting.

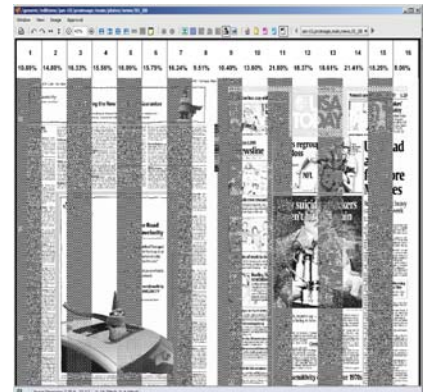
The NewsWay ink control will identify separations that arrive into the system, calculate ink coverage based on preset zones in a highly accurate manner, apply any curves that are required, and pass the data to the press control system. The application supports the industry standard CIP3 format as well as several other different proprietary interfaces.

ProImage's NewsWay ink control is an integral part of the NewsWay suite of workflow management applications. Running on the web-based platform, it provides users with all the productivity advantages of the NewsWay of controlling workflow. Designed from the ground up to be web compatible, the NewsWay servers work as Internet servers allowing users to log in from anywhere within the network over a simple web browser interface.

The NewsWay ink control is very flexible and simple to set up using its easy-to-use, very accessible setup screens. This allows for easy press upgrades and support for multiple presses from a single NewsWay system.

Newsprint and ink amount up to 50% of start-up waste. With NewsWay ink control, savings on can be significant; and you can also save time through shorter time to good copy.

All pages are available for browser-based viewing at the press console. Moreover, where a press does not have an automatic ink-zone setting capability, the NewsWay ink control will produce printouts or on-screen tabular ink values to aid in manual ink setting.



Ink-zone setting – the NewsWay ink control produces printouts or on-screen tabular ink values for easier manual ink setting.



NewsWay Scheduler

Prolmage's NewsWay Schedules – the ultimate tool for optimum production efficiency and utilization of production resources.

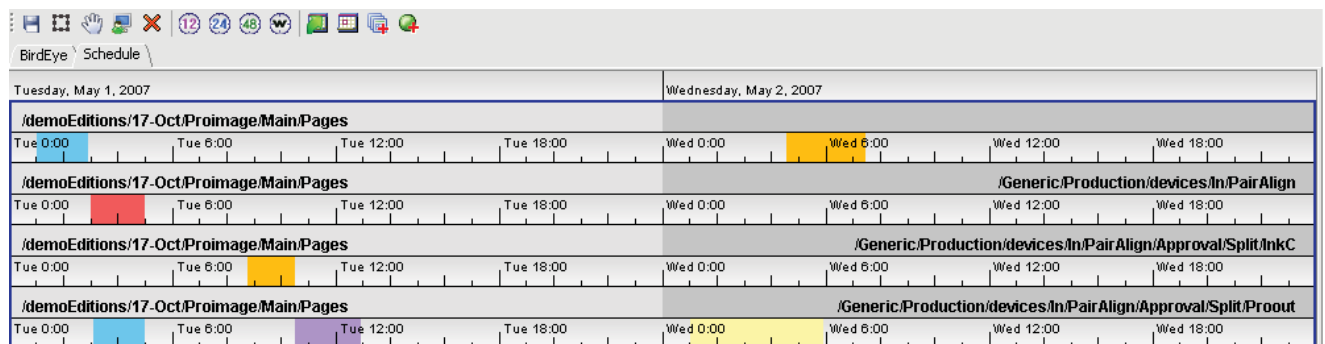
- Save capital costs
- Enjoy two-dimensional scheduling
- Ensure optimal resource utilization

Striking the balance between the investments required and the work that needs to be done is always a major challenge. If resources are not managed and used efficiently, expensive capital equipment may stay idle too much of the time. The opposite, however, can also mean missed deadlines because priorities were not managed appropriately.

NewsWay Scheduler has been designed specifically to address priorities and to optimize resource utilization. In an environment with multiple products progressing through the various stages of the workflow, a lower priority product that was released early can block the scarce and expensive production resource such as RIPs, CTF or CTP equipment.

Prolmage's NewsWay scheduler is a tool where you enter priorities of all products in advance of production. It usually reports six levels of priorities that can be increased easily to suit specific requirements. Moreover, the application has a two-dimensional scheduling mechanism that enables you to use abundant resources within a workflow while applying priorities to those resources that are scarce.

NewsWay Scheduler is the most advanced solution of its kind available on the market today.



All scheduling is done through an intuitive and easy-to-use GUI

PROIMAGE



NewsWay Plate Wizard

Plate Wizard – a tool for all printing operations.

- Intuitive GUI
- Easy preparation of templates
- Saves time and labor

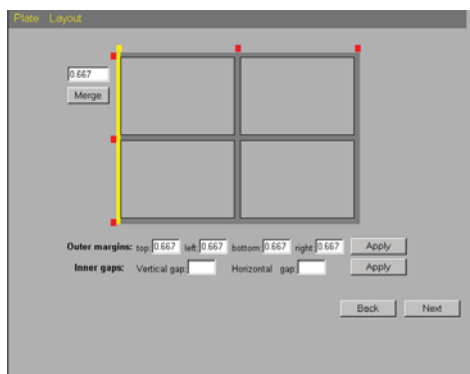
ProlImage's NewsWay Plate Wizard is a flexible software tool that will make life easier as well as reduce labor in every printing facility's prepress environment.

With both fixed and variable text (like cylinder position and color and grey bars) and bender dots on predefined locations on both the pages and the plates, Plate Wizard will also allow masking of predefined areas to allow fully automatic processing of pages from whatever source and in whatever shape they come. Moreover, through its intuitive GUI, Plate Wizard makes the preparation of unlimited numbers and types of templates a very easy job.

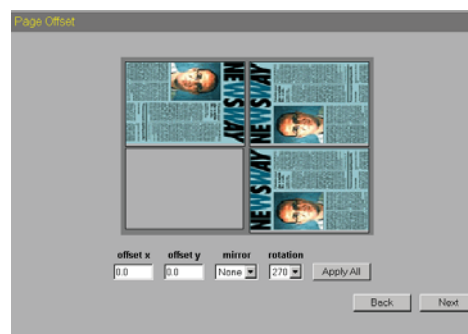
The NewsWay Plate Wizard is designed not only to be used in fully automated environments. It will also dramatically reduce labor in operations where manual stripping is employed. With NewsWay's drag-and-drop capabilities, prepress operators can easily plan final flats with multiple pages. Page pairing of tabloids to A2 film, or 4-up output on double-truck imagesetters, becomes a simple drag-and-drop operation eliminating time consuming manual stripping.

As CTP becomes more widely adopted throughout the printing industry, the one thing that is desperately required is an efficient, versatile and flexible front-end for CTP machines. With years of experience developing workflow management software, ProlImage delivers just this in the Plate Wizard.

Running on the NewsWay platform that provides instant visibility across an entire enterprise, the Plate Wizard will generate the appropriate templates for final output in bitmap or PDF formats. Through edition plans prepared in advance and using standard naming conventions, the Plate Wizard will accept pages and automatically position them in their appropriate locations.



Easily build plate templates with Plate



Page orientations are defined at the template stage



NewsWay Reports

NewsWay Reports provides easy and quick access and analysis of accumulated production data. This enables you to tune and optimize production for maximum performance, at minimum cost.

- **Production events analysis**
- **Graphical data visualization**
- **A production data warehouse**

This powerful browser-based report generation software provides the ability to compare planned schedules with actual job completion, track deadlines, evaluate plate consumption and track waste. It allows you to review file input and output time of each NewsWay workflow process, and log user times. This facilitates the rapid identification of production bottlenecks and enables you to make real-time adjustments to your production.

NewsWay Reports integrates with any workflow. The reports generated are easily exported to PDF or Excel formats, making them accessible by other people within your organization. You can even automate the creation and distribution of status reports to the executive management for "first thing in the morning".

The production statistics are accessible from the NewsWay Reports viewer and via any 3rd party data visualization tool, providing you with the tools you need for in depth analysis of production.

NewsWay Reports is a browser based application allowing easy and quick access to accumulated production data. The data is presented in a consistent, easy to read format, enabling statistical analysis to be performed effortlessly and facilitating better decision making.

Additionally, its advanced querying capabilities enable in-depth analysis of production data, customized to your requirements.

High Performance Backbone

NewsWay Reports is anchored on a specialized Reports Data Processor. The Reports Data Processor gathers production information and performance details from the machines without hampering the production flow of events. The accumulated data is reshaped to fit into a data warehouse where the production information can later be queried with simplicity and efficiency, guaranteeing high performance response to queries.

The vast amount of information gathered in such a data warehouse enables tracking of even the minutest of trends and bottlenecks.

Comprehensive reports

NewsWay Reports offers three suites of reports designed to meet your budget and needs. All suites include the NewsWay Reports Data Processor and NewsWay Reports Data Warehouse.

NewsWay Basic Reports

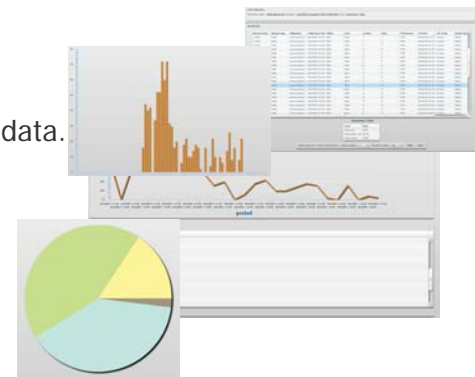
Ideal for many, this solution comes complete with a basic set of reports for output statistics and analysis, workflow throughput, and reporting on historical data.

NewsWay Enterprise Reports

NewsWay Enterprise Reports provides an extended suite of reports that additionally include reports for enterprise transmission and waste analysis.

NewsWay First Class Reports

This solution is fully customizable. It provides a tailored solution to meet the needs of the most demanding print production organization.



PROIMAGE



NewsWay Mobile

Support user mobility...

- **Increased Productivity** – access NewsWay when users are away from their desks
- **Improved Efficiencies** - monitor necessary information at anytime
- **Instant Error Notification**

The NewsWay Mobile application brings information to users when and where they need it, rather than requiring the users to wait until they're back at their primary desktops.

Its advanced functionality hidden behind a simple and elegant user interface allows viewing page and plate history and current status information, as well as advert current status information, for monitoring the progress of your publication. It provides a real time view of all workflow devices and resources, together with the processing progress status of each device. Additionally, NewsWay Mobile offers the ability to proof a page, plate or advert image during production.

NewsWay Mobile Main Uses

- Monitoring production progress, including the number of required and completed pages, plates and adverts.
- Turning devices and resources on or off.
- Receiving system notifications including errors detected by NewsWay.
- Sending and reading messages from other NewsWay users.

Matrix View

Shows the devices and resources in the selected application and the number of events in each state. Users with permission to operate devices and resources are able to turn them on and off via this view.

Edition Details View

Shows sections and books details.

• Sections

Shows a list of sections in the edition, the number of pages in each section and the number of pages that have arrived into the system.

• Books

Shows a list of books in the edition, the number of forms used for printing each book, the number of forms that have already arrived into the system and the number of completed forms.

Security

The combination of mobile devices, and an automated digital workflow demands software security of the highest standard to protect valuable publishing information from malicious intrusion. Only the highest encryption methods are deployed to ensure that all publishing information is protected.

NewsWay Mobile GUI Benefits

- Extremely close to the NewsWay browser desktop interface that users are familiar with.
- Easy navigation including a page navigation path for users to access pages already viewed.